



WHAT IS NEW IN G2 8.1

G2 8.1 ADVANCES G2'S REAL-TIME RULE ENGINE LEADERSHIP

G2® 8.1 advances G2's rule engine leadership for automating mission-critical decisions in real time within manufacturing, utilities, telecommunications, government, transportation, aerospace, and finance. G2's rule-driven applications improve business agility and performance by enabling smarter decisions that optimize operations and that detect, diagnose, and resolve costly problems.

ENHANCED USABILITY

G2 8.1 incorporates many new features through its native Microsoft® Windows® client, Telewindows®, that greatly enhance usability and richness of user-interface displays for both end users and application developers. These include:

- *Native G2 text editor* – Delivers a standard Windows look and feel that simplifies and accelerates editing of rules, procedures, and formulas. The new editor provides highlighting of syntax errors, automatic word completion, line numbers, and find and replace.
- *Windows 2D and 3D graphs* – Many new options of high-quality 2D and 3D native Windows graphs that display data relationships in real time to greatly enhance readability and analysis of the data. The graphs include the following capabilities: interactive configuration, metafiles for importing into Windows applications such as PowerPoint and interactive selection of specific data points.
- *Embeddable HTML views* – Hypertext Markup Language (HTML) documents are readily embeddable in G2's Telewindows client to enhance how information is displayed to users. Example uses include displays of rich reports, best practices, or textual information.
- *Tree view pane* – Visually and intuitively organizes complex information in applications, such as object hierarchies.

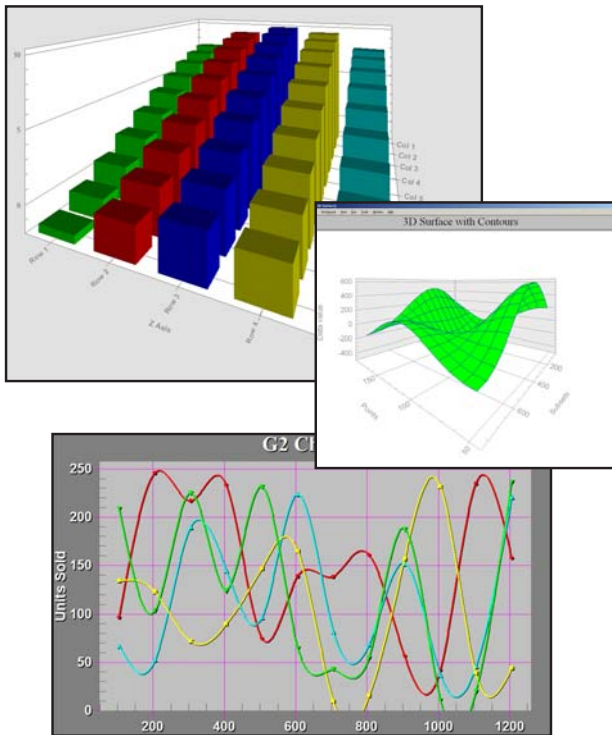
G2GL FOR HIGH-PERFORMANCE BUSINESS PROCESS EXECUTION

G2 Graphical Language, G2GL, is a major new capability for modeling and high-performance execution of business processes directly within the G2 rule engine platform. G2GL graphically represents process activities through support of the Business Process Execution Language for Web Services (BPEL) language, which is a widely adopted standard for specification of business processes and interactions on the Web. With G2GL, developers can readily model and execute sequential logic in real time for a wide variety of business and workflow processes.

G2GL supports the following BPEL capabilities:

- Importing from and exporting to other business systems using XML
- Processes and bindings
- Activities
- Variables
- Messages
- Fault handlers
- Exception handlers





G2 8.1's new 2D and 3D graphs enhance readability and analysis of data.

GREATER DEVELOPER PRODUCTIVITY

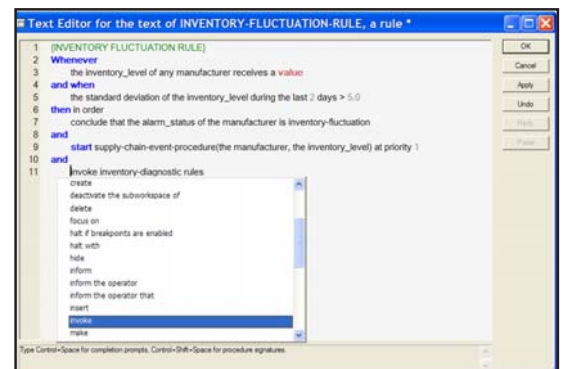
G2 8.1 shortens time to completion of projects and cuts effort through several enhancements that further improve G2's high levels of developer productivity. These include:

- *Interactive debugging and source stepping* – Cuts the time for creating procedural logic through a new highly interactive debugger that enables single stepping through source code and adding and removing dynamic breakpoints in the new G2 native Windows text editor.
- *Great circle distance function* – Simplifies modeling of applications involving representation of three-dimensional distances between physical objects, such as those for logistics and battlefield command and control.

HOW TO GET G2 8.1 AND MORE INFORMATION

For upgrades, please complete the form at www.gensym.com/index.asp?p=g2_upgrade, or contact Gensym's Order Services department in the U.S. at production@gensym.com or (781) 265-7106. For more details on G2 8.1's new features and enhancements, please review the release notes, also available from Order Services.

- *Standard Windows shortcut bar* – For building native palettes with instant access to G2 objects.
- *Standard dialog controls* – New standard Windows controls for use in custom dialogs include: tree view combo box, grid view, duration, calendar, color picker, and G2 workspace displays.
- *Connections* – New options for displaying end points of object connections include directional arrowheads, circles, and other shapes.
- *24-bit colors on workspaces and icons* – Enhances appearance of displays.
- *Windows system tray launching* – For quick launches of G2 and Telewindows.



G2 8.1's new text editor simplifies and accelerates editing of rules, procedures, and formulas.